

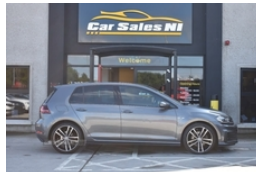


07771803919 **Conor**
07899911347 **Kenneth**

46 Beltany Road, Omagh, BT78 5NF

Volkswagen Golf 2.0 TDI 184 GTD 5dr | Jul 2017

MK7.5 NEW MODEL! VIRTUAL COCKPIT, SPORTS INTERIOR, SAT NAV



£15,900

Miles: 71230
Fuel Type: Diesel
Transmission: Manual
Colour: Grey
Engine Size: 1968
CO2 Emission: 125
Tax Band: Petrol/Diesel (£150 p/a)
Body Style: Hatchback
Insurance 27E
group:
Reg: MM17BYS

Vehicle Features

'Lights On' warning buzzer, 3 point height adj front seatbelts + pretensioners, 3 rear 3 point seatbelts, 3 rear headrests, 3 spoke steering wheel, 3D-LED-SBBR with sweeping indicator, 8" touch screen, 12V socket in luggage compartment, 60/40 split folding rear seat, ABS, Adaptive Cruise Control with pedestrian detection and speed limiter, Air conditioning - 2 zone electronic climate control, Alarm with interior protection, Ambient lighting pack - Golf, Anti-tramp function, Auto dimming rear view mirror, Automatic coming/leaving home lighting function, Automatic headlights, Automatic post collision braking, aux-in, Bag hook in luggage compartment, Black headlining, Black rear diffuser, Bluetooth hands free telephone connection, Body colour door handles, Body colour door mirrors, Body colour rear roof spoiler, Body colour sports bumpers, Boot lashing points, Brake pad wear indicator warning light, Car-Net App-Connect, CD/MP3/WMA, Child locks on rear doors, Chrome-plated light switch surround, Composition media system, Cooled glovebox, Courtesy light delay, Cover for storage compartment in centre, DAB Digital radio, Diesel particulate filter, Drive mode selector, Driver/Front Passenger airbags, Driver/Passenger whiplash optimised head restraints, Driver alert system, Driver profile selection, Drivers knee airbag, Dust/pollen filter, Electrically adjustable and heated door mirrors, Electric front windows, Electric rear windows, Electronic engine immobiliser, Electronic parking brake with auto hold, ESP with EDL + ASR, Exterior temperature gauge, Front + rear carpet mats, Front and rear curtain airbags, Front centre armrest with storage box and rear air vents, Front passenger airbag deactivation, Front passenger drawer stowage, Front passenger seat height adjust, Front seat back storage pockets, Front side airbags, Grab handles, Heated rear windscreen, Height/reach adjust steering wheel, height adjustable and removable, Honeycomb black decorative inserts, Honeycomb radiator grille - black, Illuminated door sills, Illuminated vanity mirrors, Instrument

Technical Specs

Dimensions

Length: 4258mm
Width: 1799mm
Height: 1492mm
Seats: 5
Luggage Capacity (Seats Up): 380L
Gross Weight: 1890KG
Max. Loading Weight: 570KG

Performance & Economy

Fuel Consum. (Urban Cold): 51.4MPG
Fuel Consum. (Extra Urban): 65.7MPG
Fuel Consum. (Combined): 60.1MPG
Fuel Tank Capacity: 50L
Number Of Gears: 6 SPEED
Top Speed: 144MPH
Acceleration 0-100 km/h: 7.5s
Engine Power BHP: 181BHP

cluster in white, Isofix preparation for 2 rear child seats, Leather gear knob and handbrake grip, LED daytime running lights, LED front fog lights, LED rear lights, Load through provision with rear centre armrest and cupholders x2, Lowered sports suspension, Luggage compartment cover, Luggage compartment lighting, Mirror pack - Golf, Multifunction computer, Multifunction leather steering wheel with grey stitching leather trimmed gear knob including paddle shift, Overhead storage box, Piano black centre console, Pre crash system, Progressive power assisted steering, Rain sensor, Rear windscreen washer and wiper with interval delay, Remote central locking with 2 remote folding keys, Rev counter, Space saver spare wheel, Stainless steel pedals, Storage box in luggage compartment, Storage compartments in doors, Sun visors, Trip and service interval display, Twin exhaust tailpipe, Tyre pressure monitor, Ultrasonic front and rear optical and audible parking sensors, USB and SD card reader, Variable boot floor, Warning buzzer and light for front seatbelts unfastened, XDS plus electronic differential lock

Vehicle Description

2017 Volkswagen Golf MK7.5 2.0 TDI 184 GTD 5dr Finished In Grey:

Key Features Include:

18" Factory fitted Alloy wheels
Factory privacy glass
Xenon lights
Parking sensors front and rear
LED front fog lights
Sports tartan interior
Heated front seats
Multi functional steering wheel
Adaptive cruise control
Auto lights
Electric folding door mirrors
Sat Nav
DAB Radio / Bluetooth / CD Player
Dual climate control
Auto hold assist
Drive mode select
Stop / start technology
AUX and USB ports
Centre arm rest

Call today to arrange a test drive

Tailored finance packages available to suit your needs (Excludes ROI)

Comprehensive warranty on all cars

Trade ins welcome

Delivery to North and South of Ireland if required.

MOT EXP: 14/07/21

VRT: 4639 Euros

NOX: 410 Euros